

REPLACING DOME HOSES

Reference attached drawings for part numbers and location.

1. Remove the RECOVERY TANK (92743) and set aside.
2. (Remove DOME FILTER (10460) by moving the screen and compressing the spring. When the DOME FILTER clears the side of the dome, slide the assembly out of the dome.
3. Remove each of the metal RETAINING CLIPS (41183) from each ELBOW (60760).
4. Slide the ELBOWS away from the dome. Retain the GASKETS (60591) and RETAINING CLIPS for reassembly.
5. Remove the elbows from each VACUUM HOSE (85225, 85226) by unscrewing them clockwise, reverse threads.
6. Remove the GROMMETS (60716) from each VACUUM HOSE where the hose enters the VACUUM COVER (65358).
Note: use a flat screwdriver to pry the GROMMET loose at the split and continue around the grommet to remove.
7. Remove the VACUUM COVER.

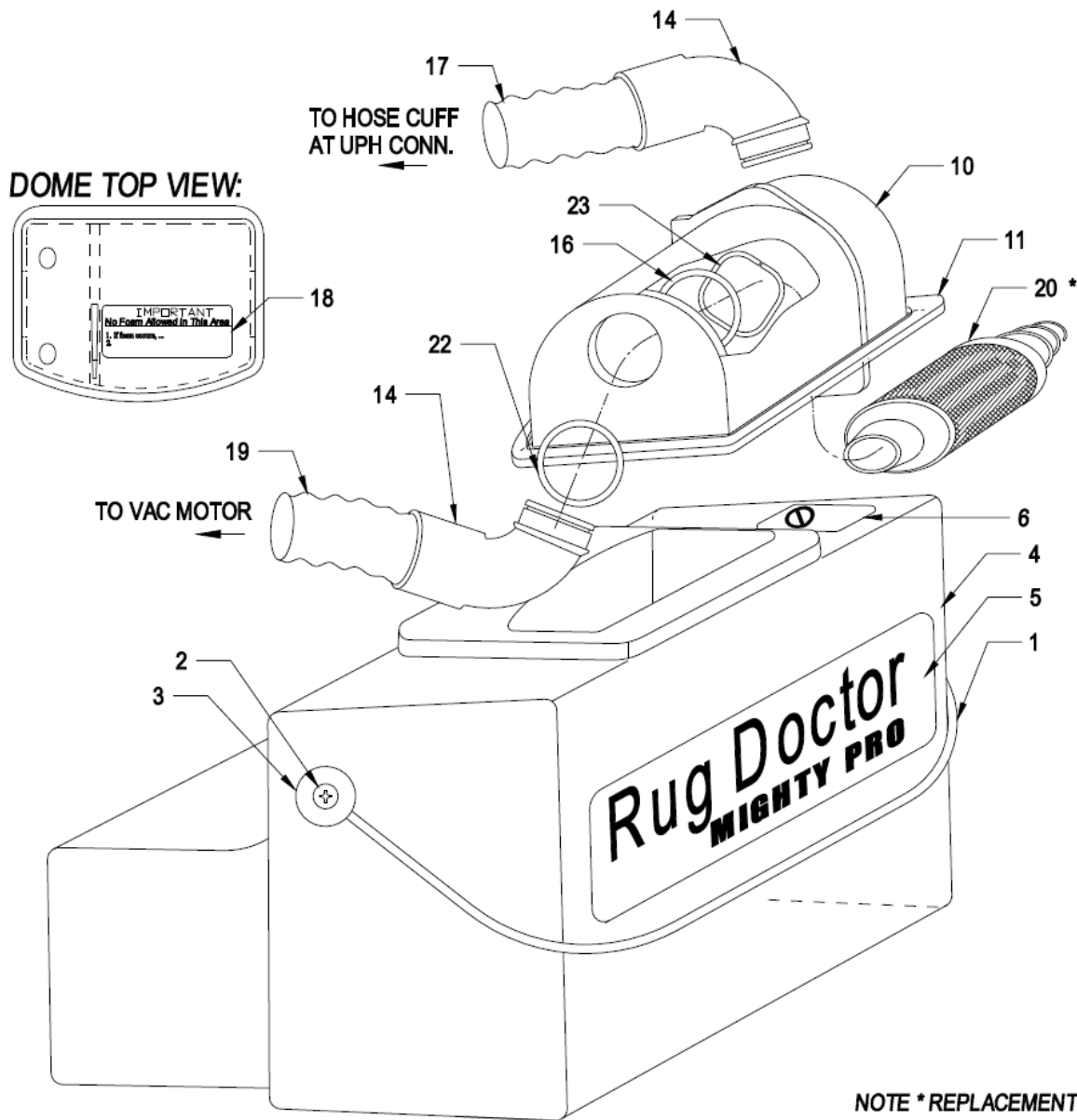
VACUUM MOTOR HOSE (85225)

8. Pull the vacuum motor VACUUM HOSE through the MAIN SUPPORT (65356).
9. Unscrew the hose from the vacuum motor ELBOW (60661).
10. Replace with the new VACUUM HOSE.
11. Reverse the procedure to position the hose up through the MAIN SUPPORT.

UPHOLSTERY TOOL HOSE (85226)

12. Disconnect the HOSE END where the upholstery tool attaches.
13. Remove any clamps or ties holding the hose on place.
14. Pull the hose out of the MAIN SUPPORT.
15. Remove the HOSE END (80780) from the HOSE by unscrewing clockwise, reverse threads.
16. Attach the HOSE END to the new hose.
17. Reverse the procedure to install the new HOSE into the MAIN SUPPORT.

18. Reinstall the VACUUM COVER, insuring to rout the HOSES back through the holes in the cover.
Note: be sure to route wires away from pinch points.
19. Reinstall GROMMETS.
Note: insure the proper length of HOSE is remaining so the DOME will align with the RECOVERY TANK.
20. Reinstall ELBOWS, screwing counter clockwise until the HOSES bottom out in the ELBOWS.
21. Readjust the ELBOWS to align with the DOME openings.
22. Reinstall GAOSKETS and RETAINING CLIPS to secure the DOME.
23. Reinstall DOME FILTER.



RECOVERY TANK ASSY WITH DOME ASSY:

NOVEMBER 5, 2012

PARTS LIST, RECOVERY TANK ASSY, MP-C2, 92359D

- 1 45147 BAIL, MP, 10.56"
- 2 20454 SCREW, 1/4-20 X 1.1" QTY 2
- 20237 NUT, LOCK, 1/4-20 QTY 2
- 60280 WASHER, SOCKET QTY 2
- 60279 GASKET, .25 ID QTY 2
- 3 65704 RETAINER, NYLON
- 4 92743 RECOVERY TANK ASSY WITH BAIL
- 5 76681 DECAL, "MIGHTY PRO" LOGO
- 6 76857 DECAL, UPPER TANK "DO NOT FILL" _BLUE

PARTS LIST, DOME ASSY 92030

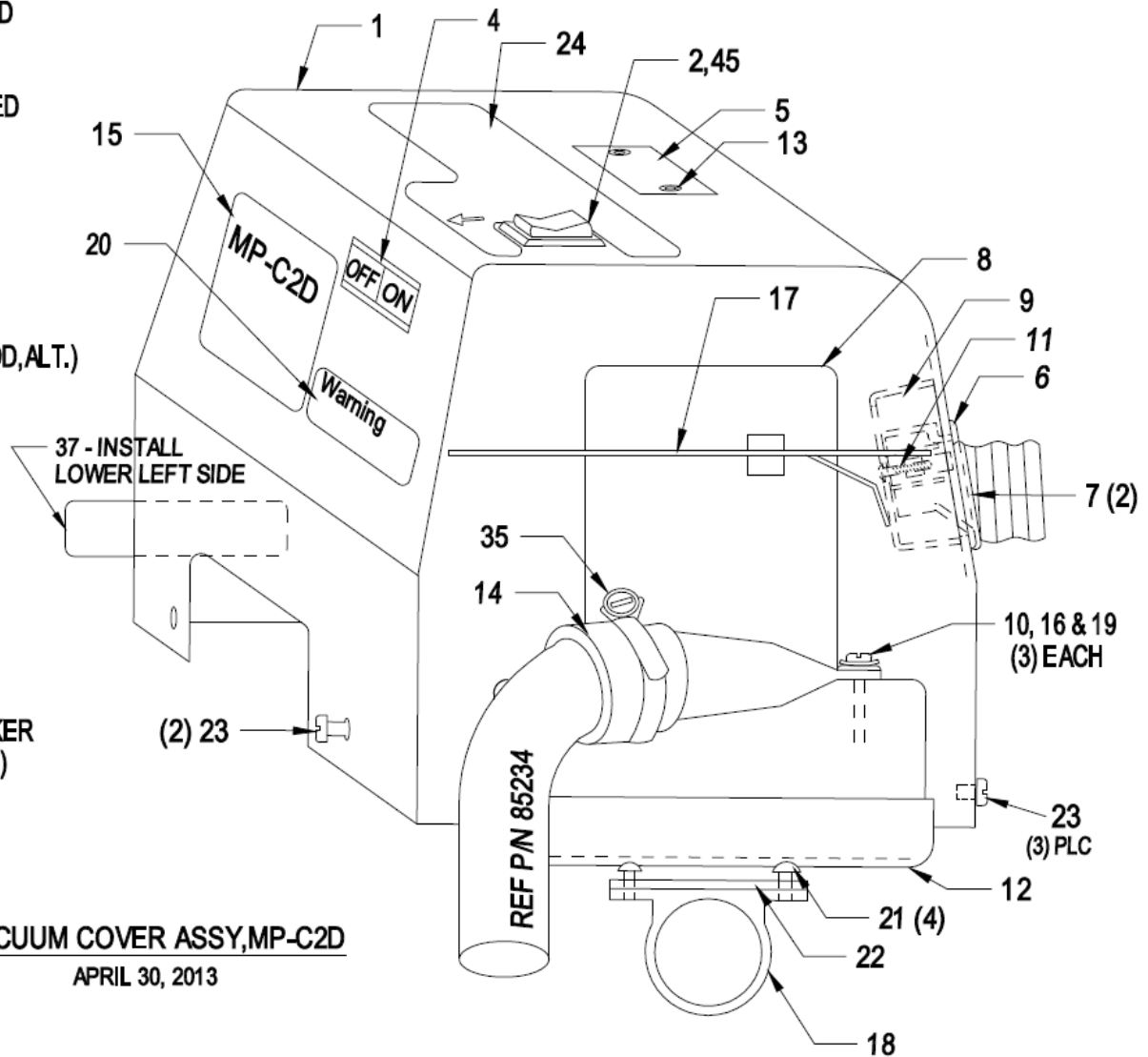
SUBASSY DOES NOT INCLUDE HOSES OR FILTER

- 10 60717 DOME, MP, CLEAR, SKIRTLESS
- 11 60701 GASKET, DOME SEATING
- 14 60760 ELBOW, 90° BLACK, WITH FLANGE (2)REQ'D
- 16 60196 WASHER, PLASTIC, BLACK, 1.56" ID, (2)REQ'D
- 17 85226 VACUUM HOSE X 20-1/2"L, Black
- 18 71590 DECAL, "IMPORTANT" NO FOAM...UNIVERSAL
- 19 85225 VACUUM HOSE X 14"L, Black
- 20 10460 FILTER, SCREEN, WITH SPRING
- 22 60591 GASKET, ELBOW, 2"OD 1 1/2"ID, .06 (2) REQ'D
- 23 41183 CLIP, RETAINING, SPRING, DOME (2) REQ'D

NOTE * REPLACEMENT SPRING (ONLY) IS P/N 11840

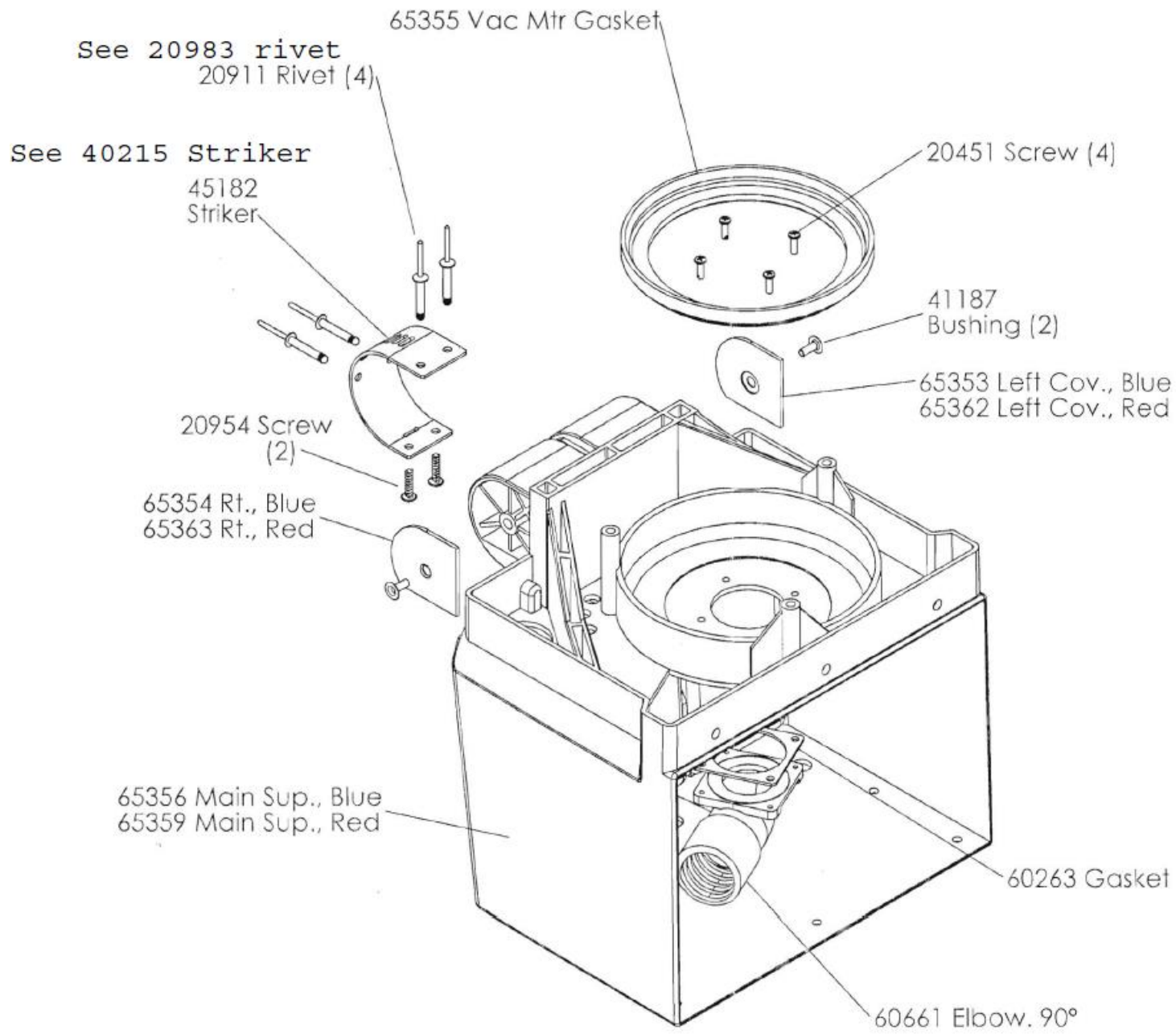
PARTS LIST, VACUUM COVER ASSY, MP-C2D, BLUE

- 1 65358 VAC COVER, BLUE, MP-C2D, VIPER SUPPLIED
- 2 51107 ROCKER SWITCH,BLACK, 2HP ON-OFF-ON
- 4 51063 CIRUIT BREAKER, 13A, ROCKER STYLE
- 5 41172 SERIAL NO. PLATE, MP-C2D , VIPER SUPPLIED
- 6 60676 POCKET PULL, FRONT
- 7 60716 GROMMET,SPLIT,BLACK, (2)REQ'D
- 8 50276 VAC MOTOR, 120V, LINIX
ORDER VAC MOTOR KIT: P/N 92727
- 9 60677 POCKET PULL, BACK
- 10 20853 WASHER,FL #10 X 5/8 O.D., (3)REQ'D
- 11 20389 SCREW, #8 X 3/4", PPH HI-LOW (2)
- 12 65355 GASKET, VAC MTR, FORMED, (OR 60635, 7"OD,ALT.)
- 13 20351 RIVET,AL,1/8"DIA X 3/8"L (2) REQ'D
- 14 60726 COUPLING,THREADED WITH FLANGE (1)
- 15 76814 LABEL, MP-C2D, ETL, FENTON, MO
- 16 19466 WASHER, LOCK, #10 EXT.STAR (3)
- 17 11848 BAFFLE, MP, UNIVERSAL VAC MOTOR
- 18 60661 ELBOW, VAC MOTOR, 90°
- 19 20952 SCREW,10-32 X 1-3/4", (3) REQ
- 20 71586 LABEL, WARNING, UL 1017
- 21 20451 SCREW, ST4 X 10mm (4) PLACES
- 22 60263 GASKET, VAC MTR ELBOW
- 23 20375 SCREW,10-32 X 1/2"L TRUSS HD (5)REQD
- 24 76868 LABEL, MP-C2C, OVERLAY, REAR CIR.BREAKER
- 35 11996 CLAMP,HOSE, 35-55mm SST, ZINC SCREW (1)
- 37 76872 LABEL, MACHINE CLEANUP, ENG/SPAN
- 45 60646 INSULATOR, ON-OFF-ON ROCKER SWITCH



VACUUM COVER ASSY,MP-C2D

APRIL 30, 2013



PARTS LIST, MAIN SUPPORT ASSY, MP-C2D:

- 1 92770 MAIN SUPPORT, MP-C WITH STRIKER & VAC ELBOW
- 2 20375 SCREW,10-32 X 1/2"TRUSS-HEAD (7) REQD
- 3 51090 BUSHING,STRAIN RELIEF, (2) REQ'D
- 4 80773 HOSE END ENLARGER
- 5 51091 NUT,STRAIN RELF BUSHING (2) REQ
- 6 20907 WASHER,.562"ID,1.0"OD,.06"TK (3) REQ'D
- 7 80780 HOSE END,TAPERED
- 8 80808 QUICK COUPLER, BRASS
- 9 80817 ELBOW,BRASS,1/4" HOSE
- 11 80784 NIPPLE,PLUG,QK CPLR.1/4" BARB, BRASS
- 12 45182 STRIKER PLATE, MP/WT/X3
- 13 20911 RIVET, 3/16"D, BULB-TITE, (4)
- 14 20453 SCREW, ST5 X 20mm, (2) REQD
- 16 92585 ALCI PLUG/ CORD, 16/3, 120V 22L
- 21 76714 LABEL, CARPET + UPH CONN, GRAY
- 23 76955 LABEL, CAUTION, PLUG, YELLOW,TRILINGUAL
- 27 11845 CLAMP, HOSE,12.8mm (2) REQ'D
- 30 60725 WASHER, RUBBER, 1-1/4"O.D., 1/4" I.D.

