



LITTLE Green PRO

INSTRUCTION MANUAL

PRODUCT VIEW



- 1 Carry Handle
- 2 Power Button
- 3 Formula & Clean Water Tank
- 4 Dirty Water Tank
- 5 Power Cord
- 6 QuickRelease™ Cord Wrap
- 7 Flex Hose
- 8 6" upholstery tool

BEFORE CLEANING

1. Vacuum area with a dry vacuum cleaner thoroughly before deep cleaning.
2. Pretreating (optional):
 - a. Pretreating is recommended to improve cleaning effectiveness for heavily soiled carpet in high traffic areas such as entryway and hallways.
 - b. **Stain Pretreat** Spray the BISSELL Pretreat formula onto heavy traffic areas, soiled areas or stains.

Allow to penetrate for at least 3 minutes.

Clean as normal, following the instructions below.

PREPARING THE MACHINE

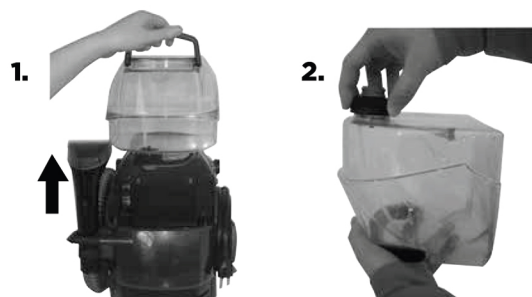
1. Remove upholstery tool from holder and unwrap flex hose completely.
2. Twist the Quick Release™ cord wrap clockwise to unwrap the power cord completely and plug into grounded outlet.

Filling formula & water tank

1. Remove tank from the back of the machine by lifting up tank carry handle.

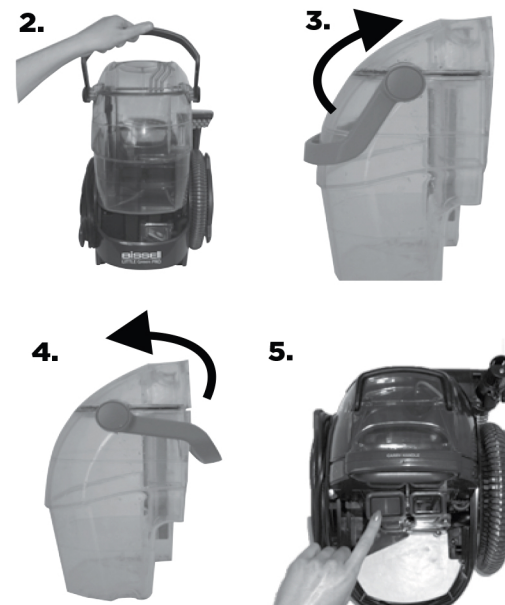
NOTE: This tank was designed with a flat bottom so it can be easily filled.

2. Unscrew the black cap and remove bottle insert.
3. Fill tank with hot tap water to the water fill line. Add two ounces (1/4 cup) of BISSELL formula to the tank.
4. Replace the bottle insert in the tank and tighten the black cap. Replace the tank on the portable machine.



4. Replace top of tank, and rotate the handle forward to lock in place on front of tank.

5. Before replacing tank on machine, wipe debris from red filter.



PREPARING MACHINE TO RETURN TO THE STORE

1. Remove upholstery tool by pressing the small black button on top and pulling tool away from hose. Rinse tool in clean running water. Reattach tool when dry.
2. Suction clean water to rinse the hose. While machine is still running, lift end of hose and stretch to ensure all water is cleared from hose.
3. Coil flex hose around the hose wrap and secure upholstery tool in holder.
4. Remove, empty, rinse, and air dry both the Formula & Clean Water tank and the Dirty Water tank. After drying, replace tanks on machine.

CLEANING FORMULA

Only use genuine BISSELL deep cleaning formula. Non-BISSELL cleaning solutions may harm the machine.

CLEANING WITH TOOLS

IMPORTANT! If using to clean upholstery, check upholstery tags. Check manufacturer's tag before cleaning. "W" or "WS" on the tag means that you can clean this with a spot cleaner. If the tag is coded with an "X" or an "S" (with a diagonal stripe through it), or says "Dry Clean Only", do not proceed with any deep cleaning machine. Do not use on velvet or silk. If manufacturer's tag is missing or not coded, check with your furniture dealer.

1. Hold the tool approximately 1" above the soiled surface. Press the spray trigger to apply the cleaning solution to the soiled area.

NOTE: Hold end of hose below the tank water level to help prime the portable spot cleaner.

2. Using the brush on the tool, gently scrub the area to be cleaned.
3. Apply downward pressure on the tool and pull it toward you. The suction will remove the dirt and cleaning solution. Continue until no more dirt can be removed.

EMPTYING THE MACHINE

1. Empty the dirty tank when dirty water reaches the "FULL" line on the tank.
2. Remove dirty water tank and carry to a utility sink, toilet, or outside to dispose of dirty water.
3. To unlock the dirty tank lid, rotate handle over the back of the tank. Remove lid and pour out dirty water. Rinse out dirty tank to remove any debris.

READ ALL INSTRUCTIONS BEFORE USING THIS PORTABLE DEEP CLEANER.

IMPORTANT SAFETY INSTRUCTIONS

When using an electrical appliance, basic precautions should be observed, including the following:

⚠ WARNING

TO REDUCE THE RISK OF FIRE, ELECTRIC SHOCK, OR INJURY:

- » Use only BISSELL cleaning products intended for use in this machine to prevent internal component damage.
- » Do not use a flammable or combustible liquid.
- » Connect to a properly grounded outlet only. See grounding instructions. Do not modify the 3-prong grounded plug.
- » Do not leave appliance when it is plugged in. Unplug from outlet when not in use and before servicing.
- » Do not expose to rain. Store indoors.
- » Do not allow to be used as a toy. Close attention is necessary when used by or near children.
- » Do not use for any purpose other than described in this Instruction Manual. Use only manufacturer's recommended attachments.
- » Do not use with damaged cord or plug. If appliance is not working as it should, has been dropped, damaged, left outdoors, or dropped into water, return to the store you rented from.
- » Do not pull or carry by cord, use cord as a handle, close a door on cord, or pull cord around sharp edges or corners. Do not run appliance over cord. Keep cord away from heated surfaces.
- » Do not unplug by pulling on cord. To unplug, grasp the plug, not the cord.
- » Do not handle plug or appliance with wet hands.
- » Do not put any object into openings. Do not use with any opening blocked; keep openings free of dust, lint, hair, and anything that may reduce air flow.
- » Keep hair, loose clothing, fingers, and all parts of body away from openings and moving parts.
- » Turn off all controls before plugging or unplugging appliance.
- » Use extra care when cleaning on stairs.
- » Do not use to pick up flammable or combustible materials (lighter fluid, gasoline, kerosene, etc.) or use in areas where they may be present.
- » Do not use appliance in an enclosed space filled with vapors given off by oil base paint, paint thinner, some moth proofing substances, flammable dust, or other explosive or toxic vapors. Do not use to pick up toxic material (chlorine bleach, ammonia, drain cleaner, etc.).
- » Do not pick up anything that is burning or smoking, such as cigarettes, matches, or hot ashes.
- » Keep appliance on a level surface.
- » Do not carry the appliance while in use.

⚠ WARNING

Improper connection of the equipment-grounding conductor can result in a risk of electrical shock. Check with a qualified electrician or service person if you aren't sure if the outlet is properly grounded. DO NOT MODIFY THE PLUG. If it will not fit the outlet, have a proper outlet installed by a qualified electrician. This appliance is designed for use on a nominal 120-volt circuit, and has a grounding attachment plug that looks like the plug in the illustration. Make certain that the appliance is connected to an outlet having the same configuration as the plug. No plug adapter should be used with this appliance.



GROUNDING INSTRUCTIONS

This appliance must be connected to a grounded wiring system. If it should malfunction or break down, grounding provides a safe path of least resistance for electrical current, reducing the risk of electrical shock. The cord for this appliance has an equipment-grounding conductor and a grounding plug. It must only be plugged into an outlet that is properly installed and grounded in accordance with all local codes and ordinances.

ATTENTION

Some Berber carpets have a tendency to fuzz with wear. Repeated strokes in the same area with an ordinary vacuum or deep cleaner may aggravate this condition.